



# Sealed Lead-Acid Battery

UPG No. 45969

# 6V200

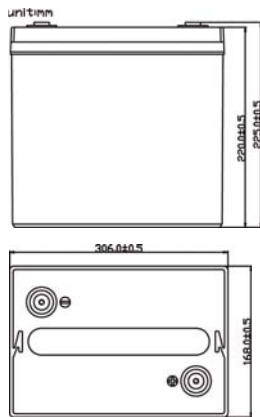
Absorbant Glass Mat (AGM) technology for superior performance. Valve regulated, spill proof construction performance. Valve regulated, spill proof construction allows safe operation in any position. Approved for transport by air. D.O.T., I.A.T.A., F.A.A. and C.A.B. certified. U.L. recognized under file number MH.

Maintenance-Free

## Specification

<b>Nominal Voltage</b>	6 volts (3 cells)			
<b>Nominal Capacity</b>	200AH			
20-hr. (0.75A to 10.50 volts)	200AH			
<b>Approximate Weight</b>	60.62 lbs (27.5 kgs)			
<b>Terminal - Connector Insert</b>	M6.0			
<b>Max Discharge Current for 5 sec. (A)</b>	2000 A			
<b>Max Charge Current (A)</b>	70 A			
<b>Ambient Temperature</b>				
Charge	0°C (32°F) to 40°C (104°F)			
Discharge	-20°C (-4°F) to 50°C (122°F)			
Storage	-20°C (-4°F) to 40°C (104°F)			
<b>Expected Life for Standby Use at 20°C</b>	1-3 Years			
<b>Case</b>	ABS Plastic			
<b>Self-Discharge Characteristics (25°C)</b>				
Aging Time	3 Months	6 Months	12 Months	
Residual Capacity	91%	82%	64%	
<b>Effect of Temperature on Capacity (20hr)</b>				
Temperature	40°C	25°C	0°C	-15°C
Dependency of Capacity (20hr)	102%	100%	85%	65%

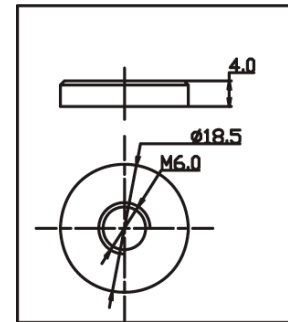
## Physical Dimensions: in (mm)



**L:** 12.05 in (306 mm)  
**W:** 6.61 in (168 mm)  
**H:** 8.66 in (220 mm)  
**TH:** 8.86 in (225 mm)

Tolerances are +/- 0.04 in. (+/- 1mm) and +/- 0.08 in. (+/- 2mm) for height dimensions. All data subject to change without notice.

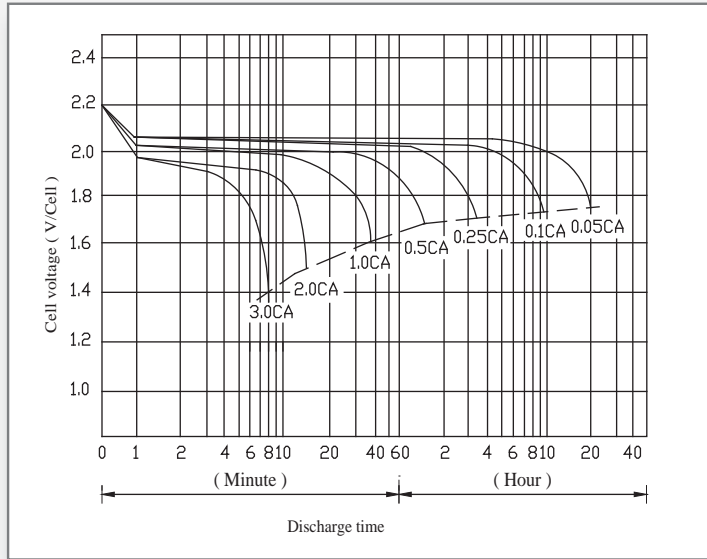
## Terminals



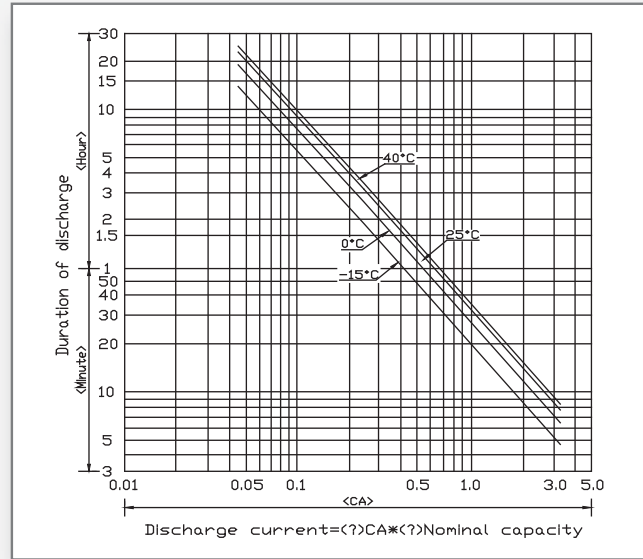
## Charge Current & Final Discharge Voltage

Application	Charge Voltage(V/Cell)			Max.Charge Current	Final Discharge Voltage V/Cell	1.75	1.70	1.60	1.30
	Temperature	Set Point	Allowable Range						
Cycle Use	25°C (77°F)	2.45	2.40~2.50	0.35C	Discharge Current(A)	0.2C>(A)	0.2C<(A)<0.5C	0.5C<(A)<1.0C	(A)>1.0C
Standby	25°C (77°F)	2.325	2.30~2.35						

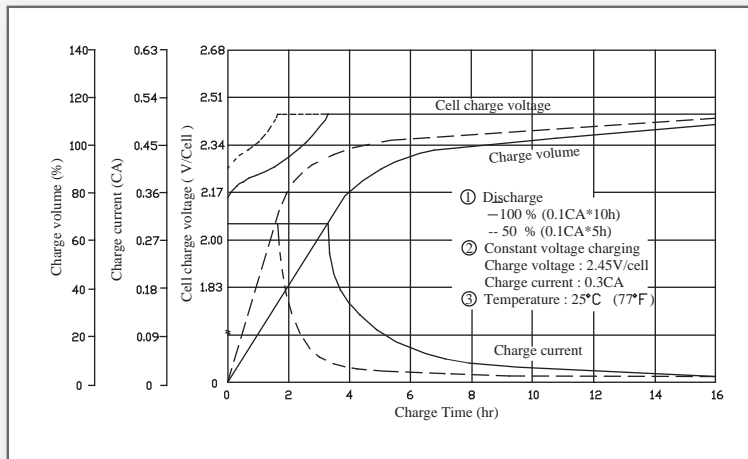
### Battery Discharge Characteristics



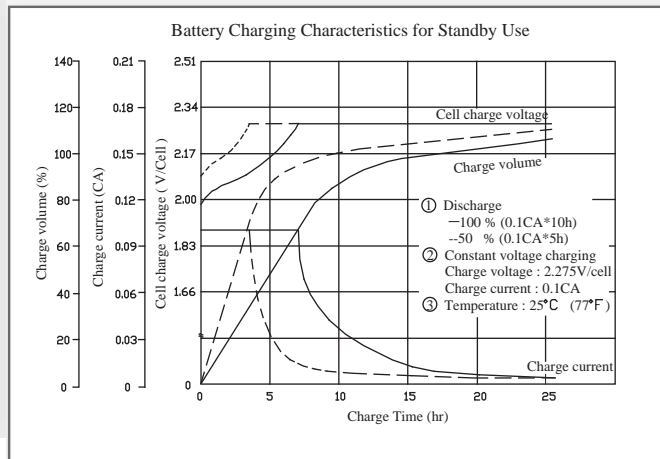
### Battery Discharging Current VS Discharging Time



### Battery Charging Characteristics for Cyclic Use



### Battery Charging Characteristics for Standby Use



Let UPG Power Your Life.

www.upgi.com