

Optimizing Commercial PV Systems



Optimizing at the Module Level
Get more power, more revenue,
and more insight into your system
performance

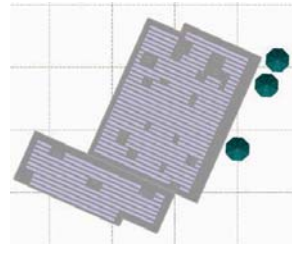
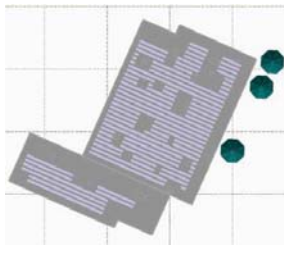


> Improve Your Bottom Line

MORE POWER FROM YOUR ROOFTOP

Increase your system size with more modules on the roof

Flexible site design > More modules on the roof > More power



Traditional inverter | 149.5kW DC

SolarEdge | 200kW DC
34% more power

OPTIMIZED MODULE PRODUCTION

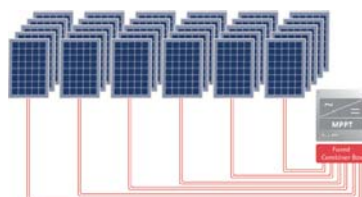
SolarEdge mitigates power losses due to mismatch between modules for maximum power generation from each module. With SolarEdge, weaker modules do not affect the strong ones. Performance benefits validated by leading third party testing facilities.

Mismatch sources



SIMPLIFIED ELECTRICAL DESIGN

Less electrical components for lower cost and improved reliability



Traditional system



SolarEdge system

>Secure Your Investment

COST SAVING MAINTENANCE

- > Free module-level monitoring for 25 years
- > Maintenance teams “Know Before they Go” reducing truck rolls to solve issues
- > Connect on the go and monitor your system on your phone, tablet or computer
- > Low Cost of Ownership: 25 year warranty on power optimizers
- > 12 year warranty on inverter - low cost extension to 20/25 years

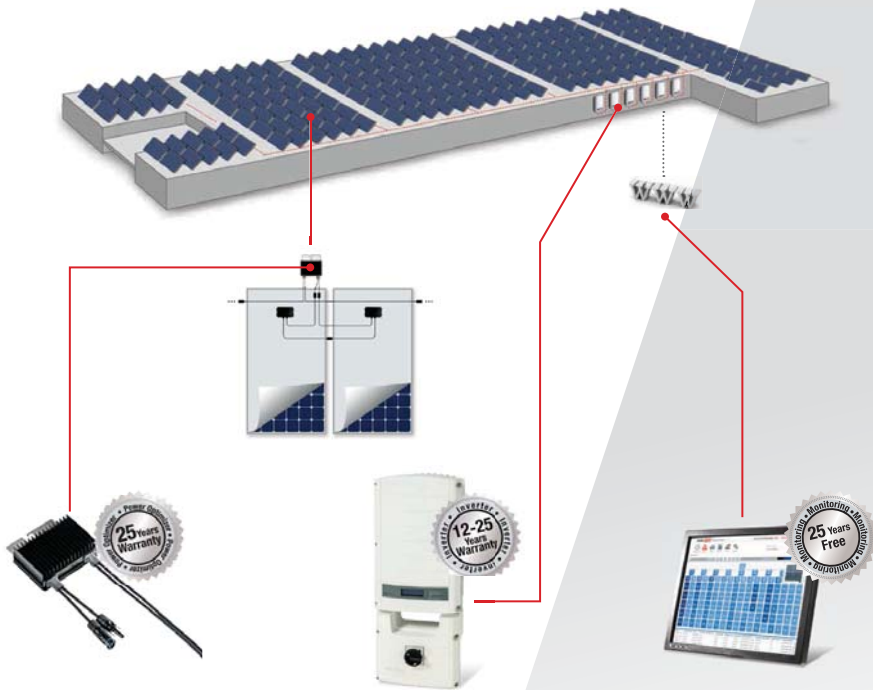


PEACE OF MIND

- > Proven third party tested system backed by best in class warranty
- > Advanced safety system completely de-energizes entire array
- > Better suited for future insurance requirements



More Power • More Revenue • More Insight



2-to-1 Optimization for 60 and 72-cell modules

Module-level MPPT - no mismatch power losses

Strings of uneven length, modules on multiple azimuths & tilts

Compatible with SolarEdge 3 phase inverters (see specifications)

SafeDC™ - automatic module-level safety shutdown

SE9K, SE14.4K (208V) SE10K, SE20K, SE33.3K (277/480V)

Lower cost compared to traditional inverters

Superior efficiency

Small, lightweight, easy to install

Built-in communication gateway

SolarEdge Monitoring

Full visibility of system performance

Remote troubleshooting: "Know before you go"

