

Sunny Beam™



Wireless Data Monitoring and Storage for Sunny Boy Inverters



Monitors up to
4 Sunny Boys

Wireless – no data cabling
required

Monitor all key performance
data at a glance

Watch solar output in a
real-time graph

Record, store and review
system performance

Built-in solar cell extends
battery life

USB ready for data transfer
to a PC or recharging the
batteries

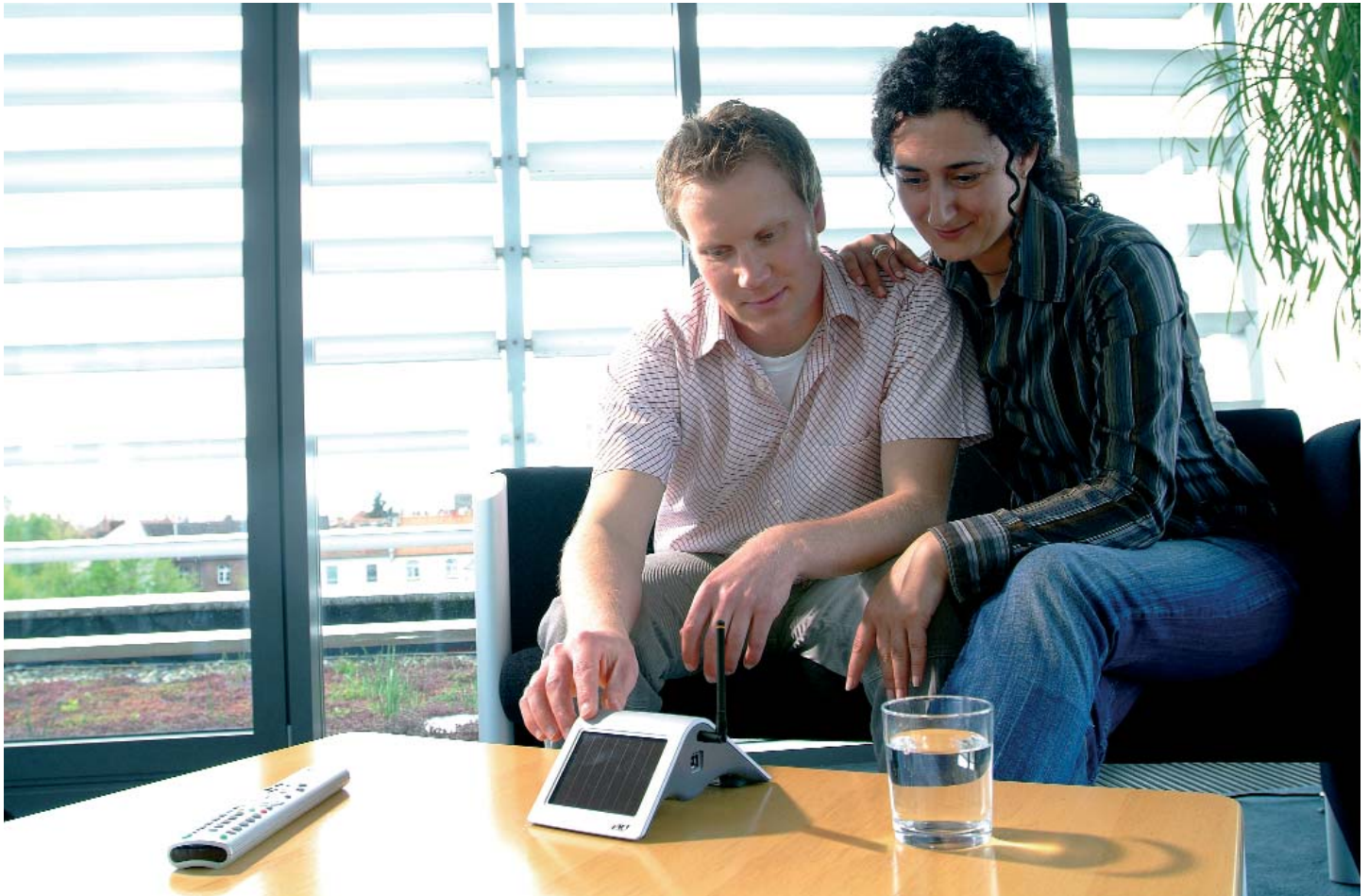
Large, easy-to-read LCD
display

Sleek design for the home
or office

Desktop or wall mount

Introducing the new Sunny Beam wireless system monitor from SMA. Now you can remotely monitor the performance of your Sunny Boy PV system - without wires. The Sunny Beam displays real-time power output numerically and graphically, either for the complete system or up to four individual inverters. It stores a month's worth of production data for review at any time, day or night. Its sleek design incorporates a solar cell for power. The large LCD screen displays key data at a glance. Easy to setup and use, the Sunny Beam provides the next step in monitoring convenience.

System performance at your fingertips



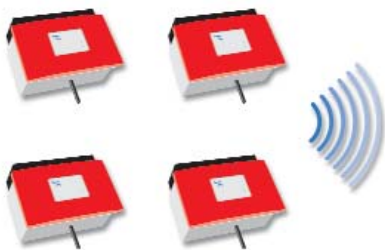
Wireless monitoring convenience

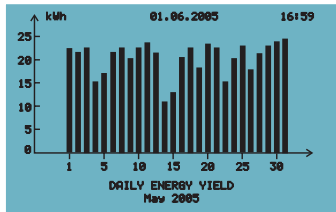
System monitoring is now more convenient than ever with the new wireless Sunny Beam from SMA. The Sunny Beam may be placed anywhere within radio range of the inverters, (up to 300 ft.), on a desktop, kitchen counter or on the wall. The Sunny Beam will monitor up to four inverters and provide simultaneous display of power out-

put, daily energy and energy total. It automatically logs and graphs each day's energy production for the past thirty days. The built-in solar cell keeps the internal batteries fully charged. The batteries may also be recharged via the built-in USB port.

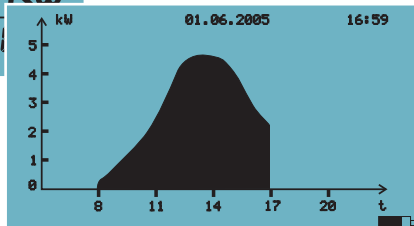
The Sunny Beam is compatible with any combination of old or new Sunny Boys. Installation and set-up is quick and easy. Simply install an antenna on each Sunny

Boy and step through the automatic configuration screens. User menus are navigated with a simple selector knob. The Sunny Beam may be configured to also show avoided CO₂ and the PV plant's total earnings in dollars. The sleek design makes the Sunny Beam a welcome addition to any home or office, with system performance available at a glance – wirelessly.





Monthly Overview



Graph of Daily Output Power

- Individual Output Power —
- Combined Output Power —
- Total Daily Output Power —



- Sunny Beam
- Battery Level
- Status Line
- Total Output Power

Display, store and compare Performance Data

Connect the Sunny Beam USB port to a PC and view real-time performance data with Sunny Data Control. The past month's daily kilowatt-hour production may be downloaded to the PC. This data can be sent to the Sunny Portal, SMA's free internet server portal, for permanent storage. Long term performance data may be viewed from any web browser, wherever you may be. The Sunny Portal web site offers easy-to-read charts and graphs for you to compare the performance trends of your PV plant.



The Sunny Beam Kit

The Sunny Beam comes as a kit with everything needed to communicate with one Sunny Boy inverter. Simply purchase up to three additional antenna/communication boards for a nominal fee to communicate with up to four inverters. Each kit includes:

- Sunny Beam
- AA rechargeable alkaline batteries
- Communication board and antenna for one inverter
- USB cable and Sunny Data Control software
- Wall mount bracket

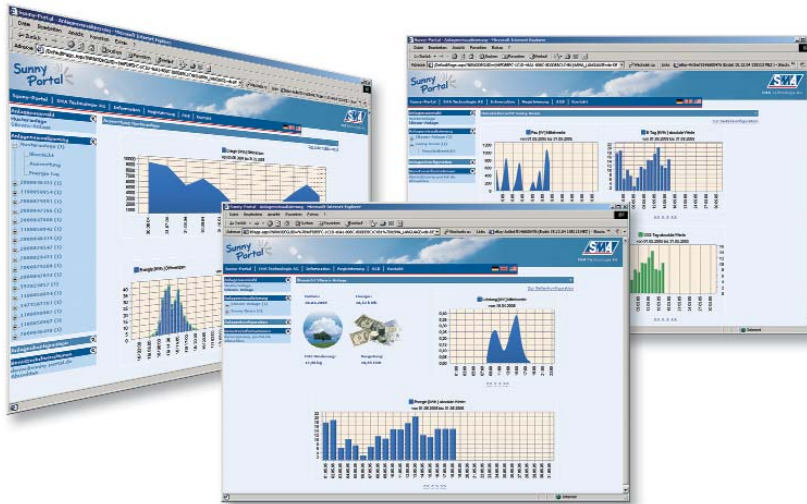
Specifications

Internal Batteries	(2) Size AA, 1.5 V Rechargeable Alkaline
Operating Temperature	32° to 104° F (0° to 40° C)
Dimensions (Excluding Antenna)	6.0W x 7.75D x 2.87H in. (152W x 196D x 73H mm)
Weight	0.75 lbs (350g)
Frequency	928 MHz
Approximate Range	100 ft. (30m) indoors 300 ft. (100m) outdoors
PC Interface	USB 1.1
Display	Graphical LCD
Certification	FCC Part 15
Available Data	Total plant power Individual inverter power Total earnings CO ₂ offset 31 day yield history Inverter serial number



The SMA family of data technology products

SMA America offers a wide range of data and communication related products to suit any application and budget. From the affordable Sunny Beam wireless system monitor for both home and commercial use, to the advanced data handling ability of the Web Box, SMA has the right product to meet your communication needs.



Sunny Portal

- Free interactive access to your PV plant
- Storage and individual display of your system data
- Remote monitoring and service via internet
- Free registration at www.SunnyPortal.com



Sunny Data Control

- Total plant overview display
- Access system parameters
- Download stored data to PC
- View individual inverter performance



Sunny WebBox

- Remote system monitoring and diagnosis
- Long-term storage of inverter data
- Communicates via RS485 or Ethernet
- System status viewed via Web browser
- Data stored on removable SD card or USB memory stick



SMA America Web Site

- For more information and document downloads visit www.sma-america.com

Sales Contact:

SMA America, Inc.
12438 Loma Rica Dr.
Grass Valley, CA. 95945
530.273.4895
info@sma-america.com

Supplied by:

