



Washer, Electrical Equipment Bond

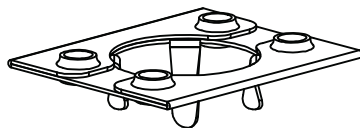
WEEB[®] WASHER

INSTALLATION INSTRUCTIONS

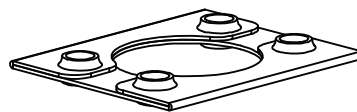
For Pole Mounts

Please read carefully before installing.

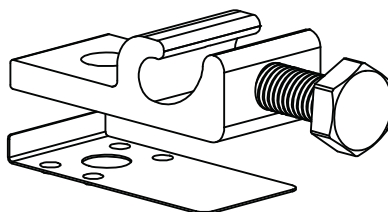
Burndy LLC recommends that the sufficient details of the installation be submitted to the AHJ for approval before any work is started.



WEEB-9.5



WEEB-9.5NL



WEEB-LUG-6.7 assembly



Products are tested to UL 467, CAN/CSA-C22.2 No. 41
US / Canadian standards for safety grounding and bonding equipment.

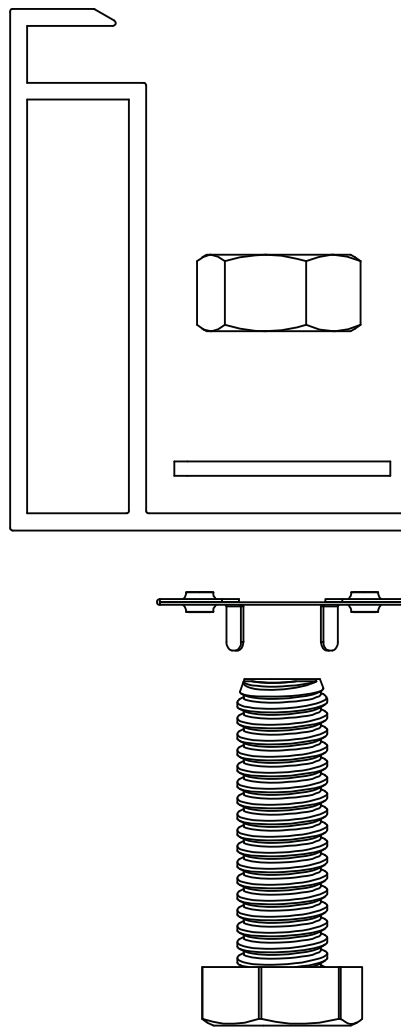


WEEB COMPATIBILITY

The WEEB family of products can be used to bond anodized aluminum, galvanized steel, steel and other electrically conductive metal structures. All installations shall be in accordance with NEC requirements in the USA and with CSA C22.1 in Canada. The WEEBs are for use with modules that have a maximum series fuse rating of less than 25A.

Bottom Mounting Modules

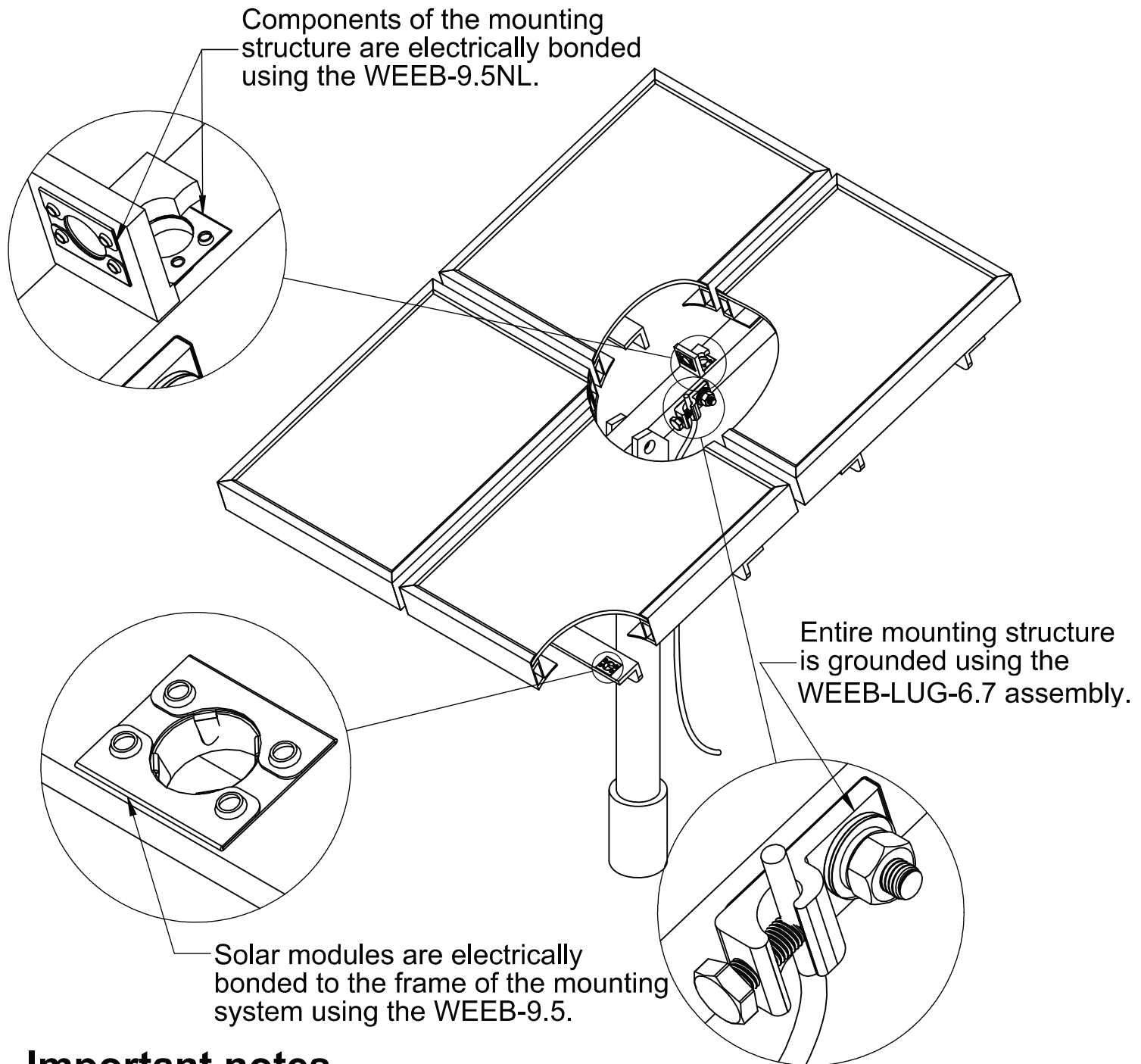
The WEEBs used for bonding the PV modules to the mounting rails are compatible with various cross-sections of module frames. The following is an example of a module frame that is compatible. Notice that the WEEB teeth are positioned completely under the edge of the module frame.



Important Note:

Inspect each module frame used with a WEEB to ensure that the bottom mounting face of the frame is flat, and that there are no hinderances to embedding WEEB teeth. Do not use a module with a frame that prevents the WEEB teeth from embedding fully.

SYSTEM OVERVIEW

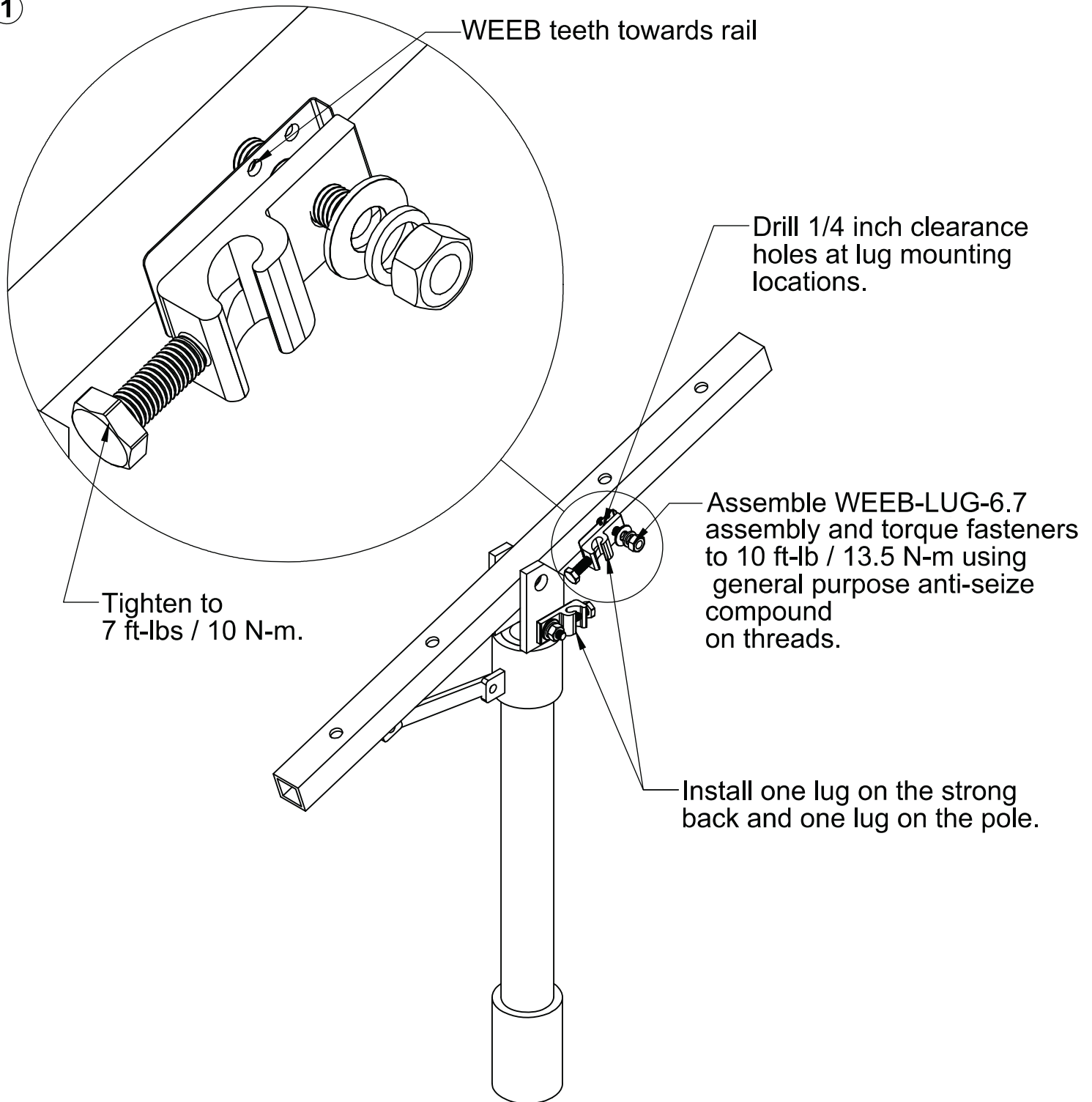


Important notes

1. Use general purpose anti-seize compound on fastener threads when installing WEEBs.
2. The NEC section 690.43 states, "Exposed non-current carrying metal parts of module frames, equipment, and conductor enclosures shall be grounded in accordance with 250.134 or 250.136(A) regardless of voltage."

WEEBLug INSTALLATION

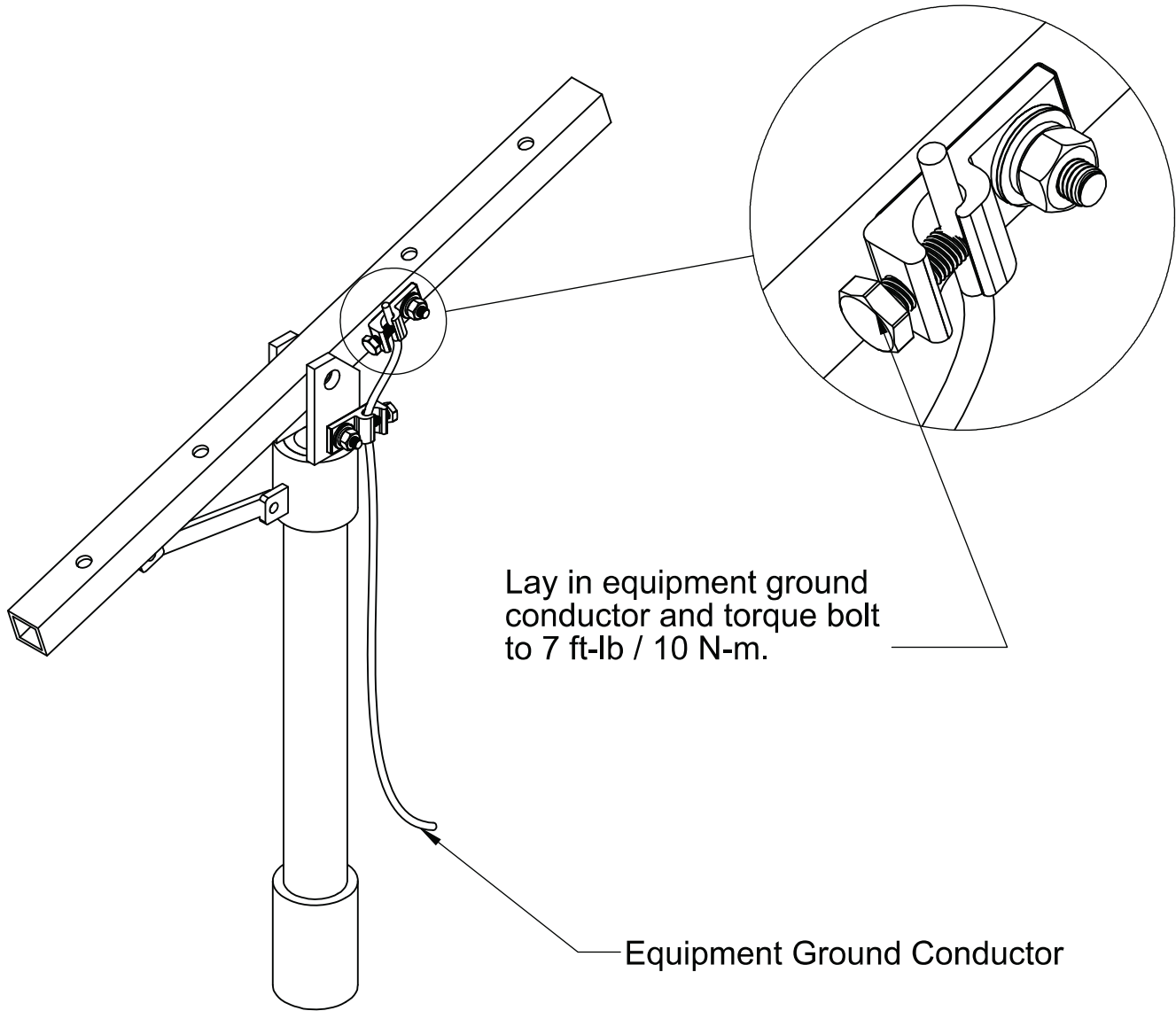
1



Important note:

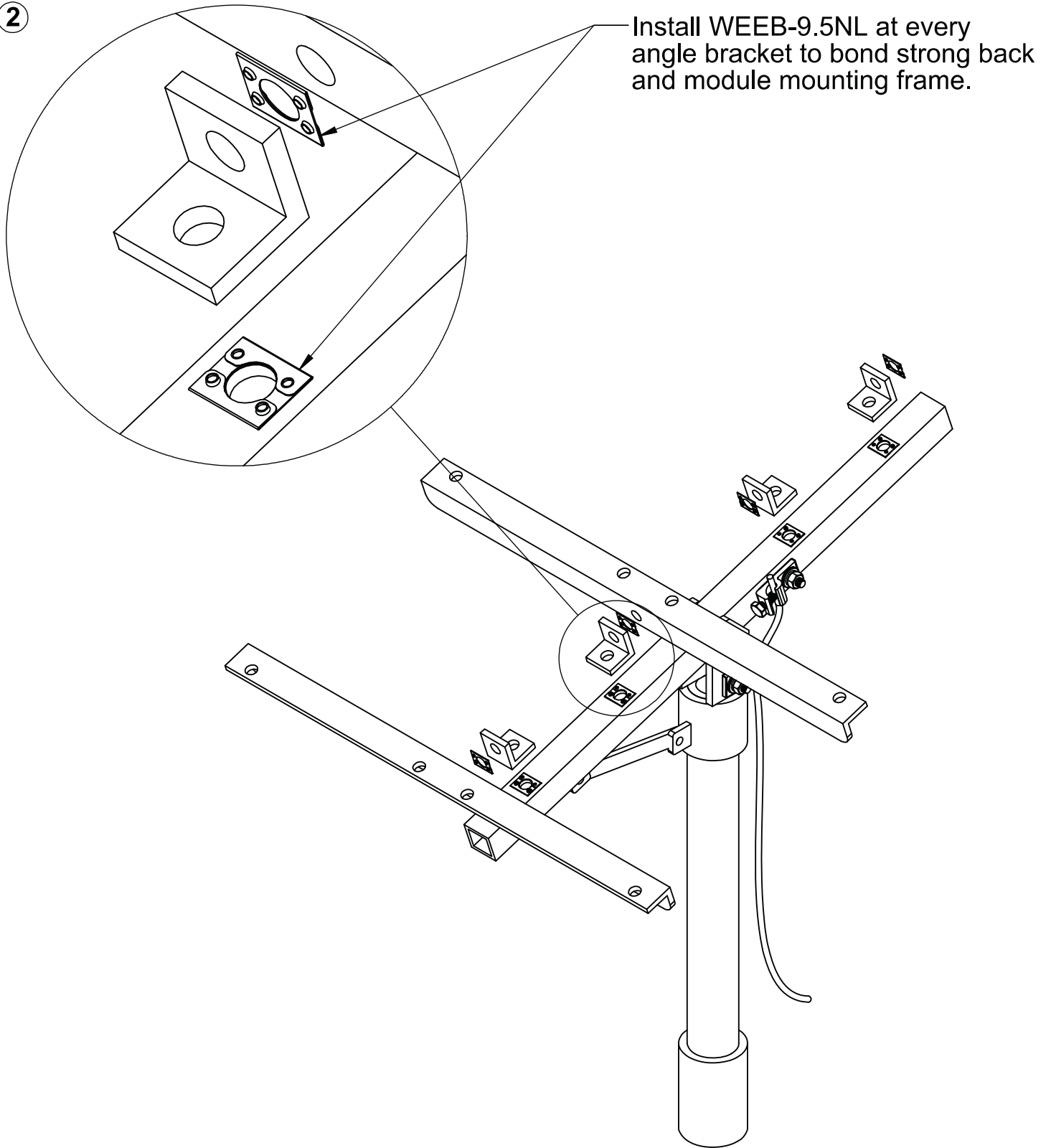
The WEEB-LUG-6.7 may be used with a maximum equipment ground wire of 6 AWG.

GROUND CONDUCTOR ASSEMBLY



WEEB-9.5 NL Installation

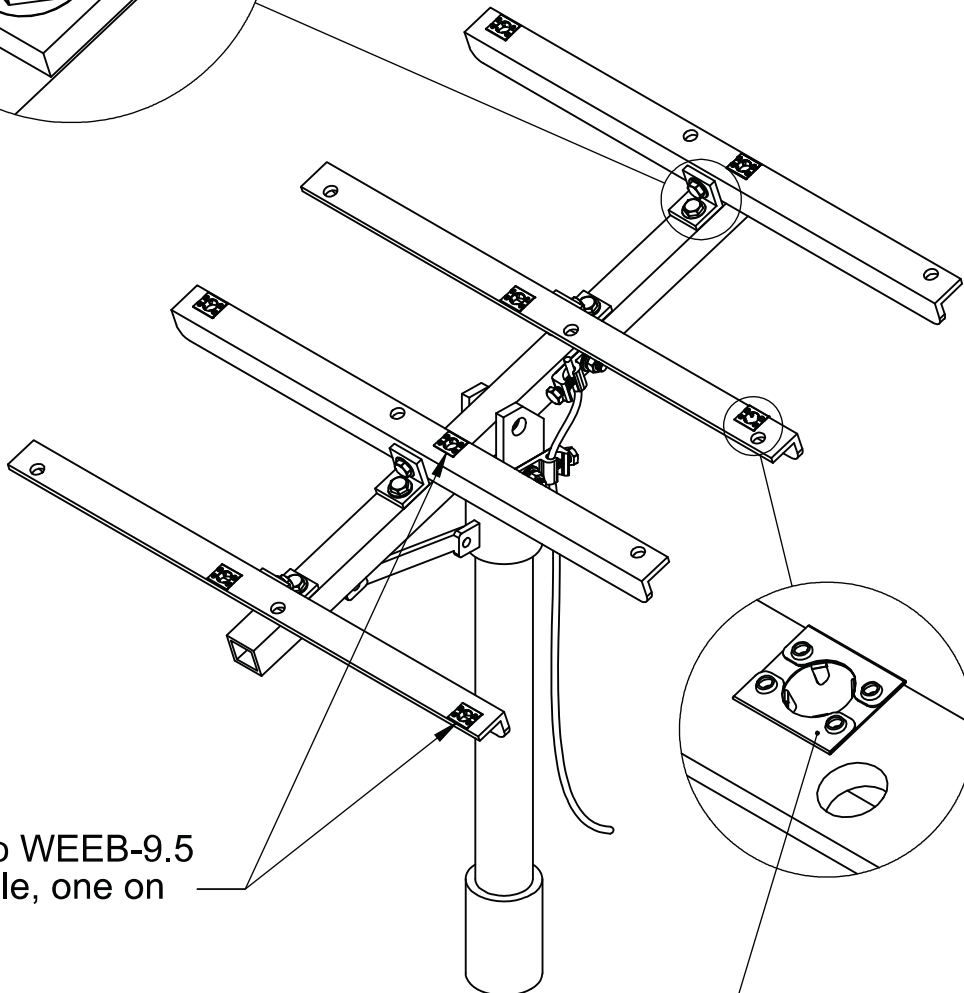
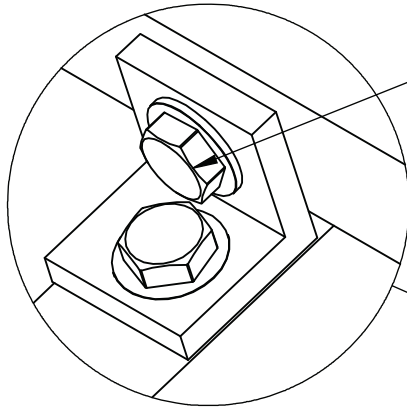
2



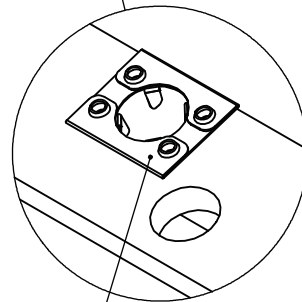
WEEB-9.5 Installation

3

Tighten fasteners to 15 ft-lbs / 20.3 N-m after aligning all rack members. Use general purpose anti-seize on threads.



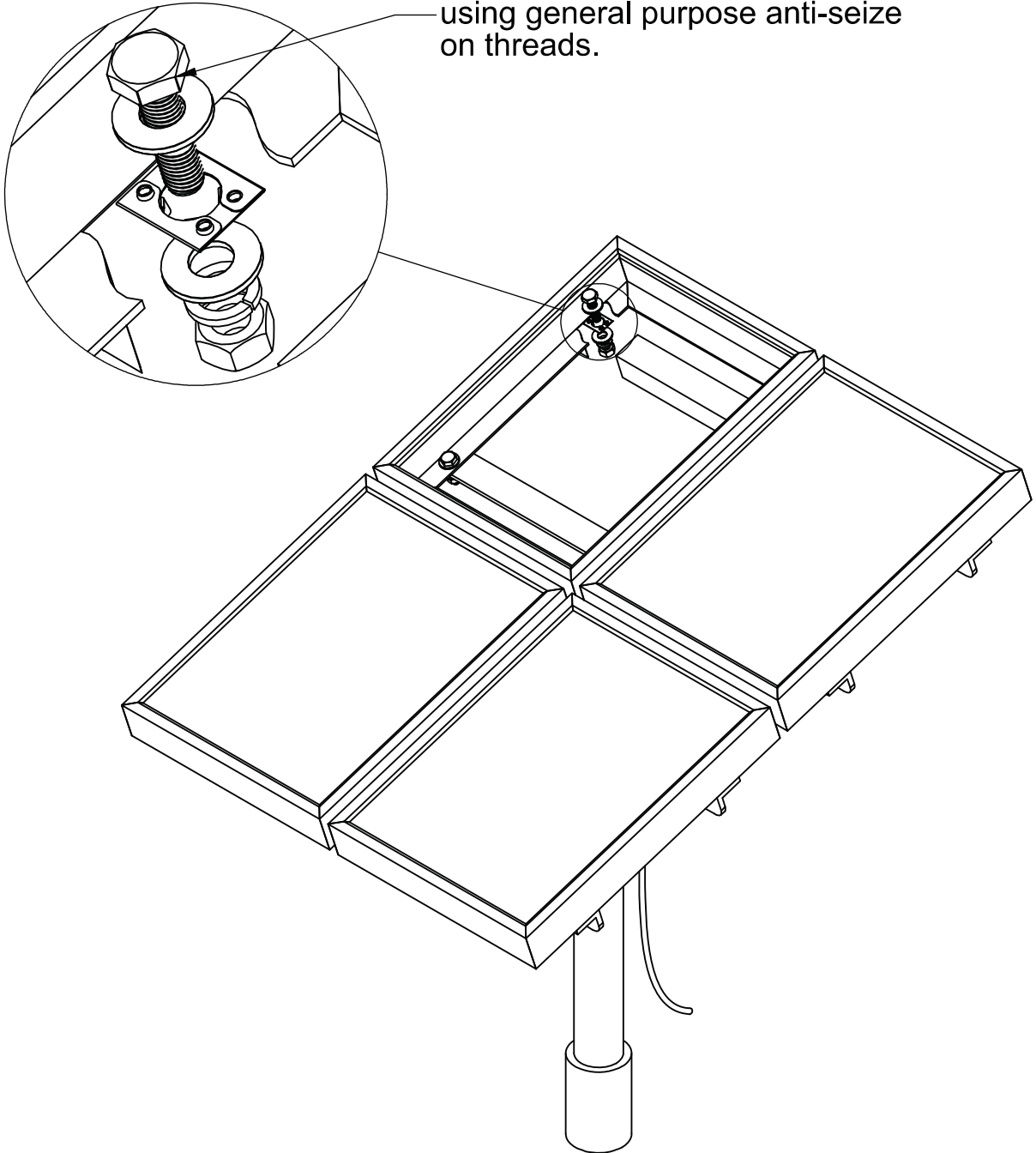
Install two WEEB-9.5 per module, one on each rail.



Push WEEB-9.5 into 5/16 inch clearance hole.

4

Tighten fasteners to 15 ft-lbs / 20.3 N-m using general purpose anti-seize on threads.



Customer Service Department

7 Aviation Park Drive
Londonderry, NH 03053

1-800-346-4175

1-603-647-5299 (International)