

Wiley Electronics LLC

Washer, Electrical Equipment Bond

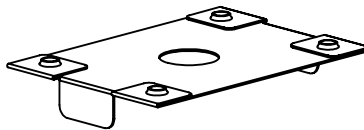
WEEB

Patent Pending

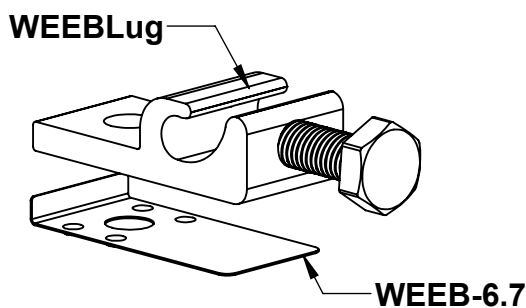
INSTALLATION INSTRUCTIONS

For AEE SnapNRack Only

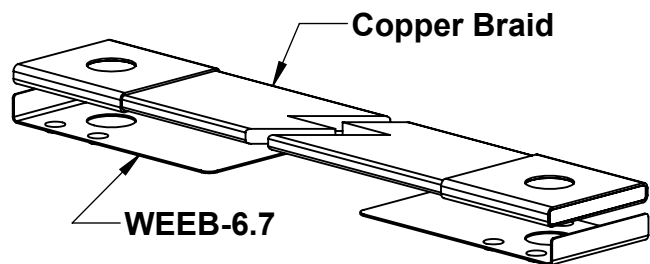
Please read carefully before installing.



WEEB-PMC



WEEBL-6.7 assembly



WEEB Bonding Jumper



Products are tested to UL 467 3098177
UL standard for safety grounding and bonding equipment

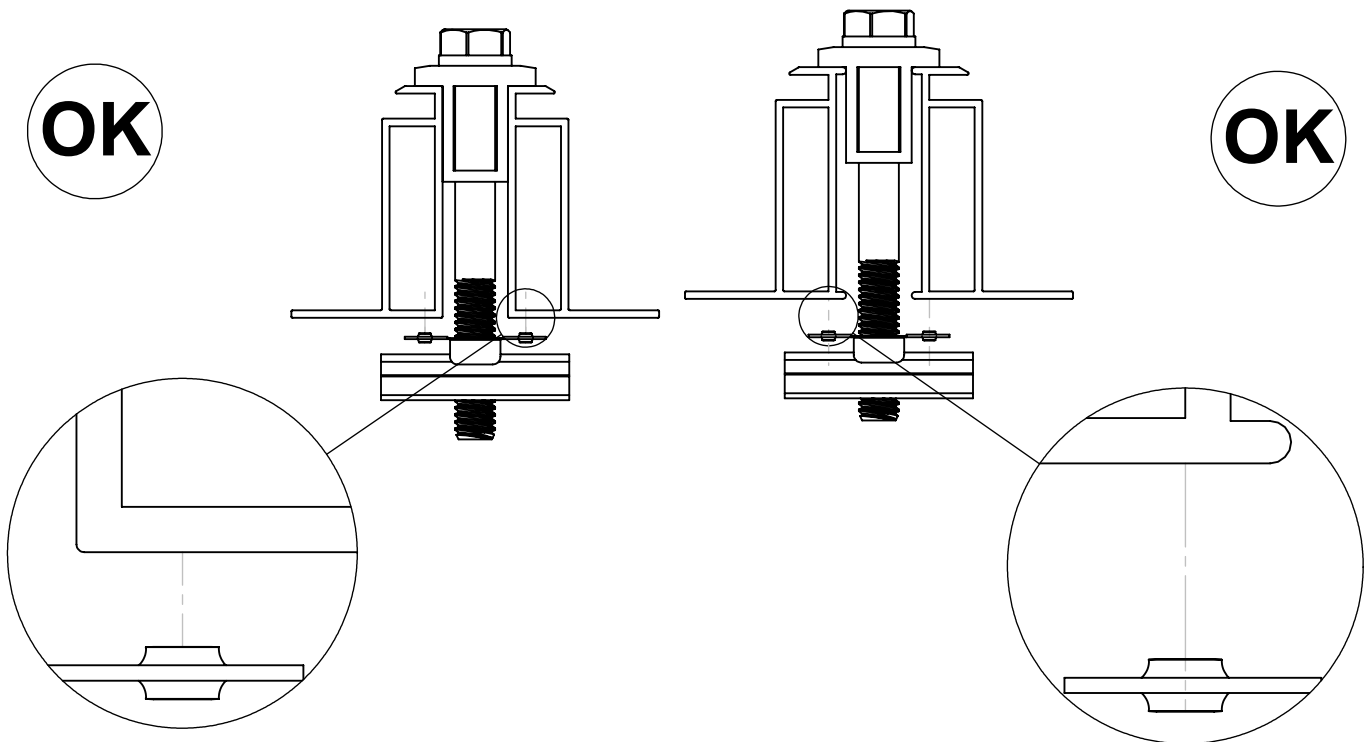
Document Number 104-0404-000034-002

WEEB COMPATIBILITY

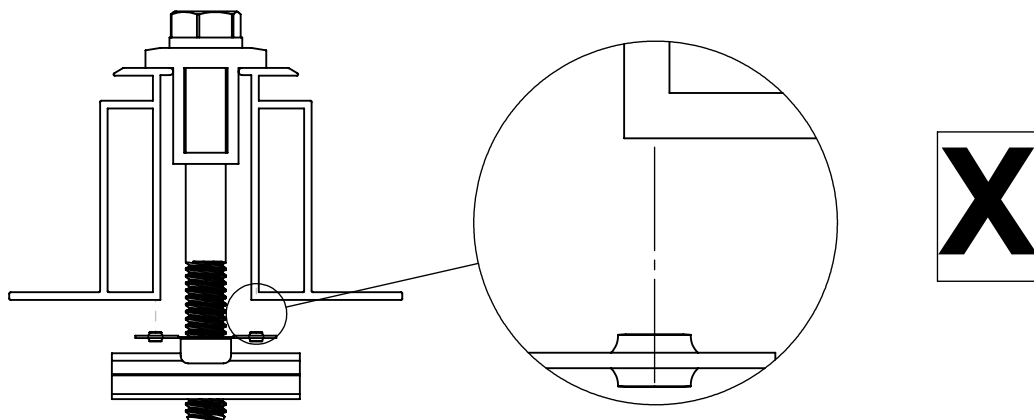
The WEEB family of products can be used to bond anodized aluminum, galvanized steel, steel and other electrically conductive metal structures.

Standard Top Down Clamps

The WEEBs used for bonding the PV modules to the mounting rails are compatible with various cross-sections of module frames. The following are examples of module frames that are compatible. Notice that the WEEB teeth are positioned completely under the edge of the module frame.

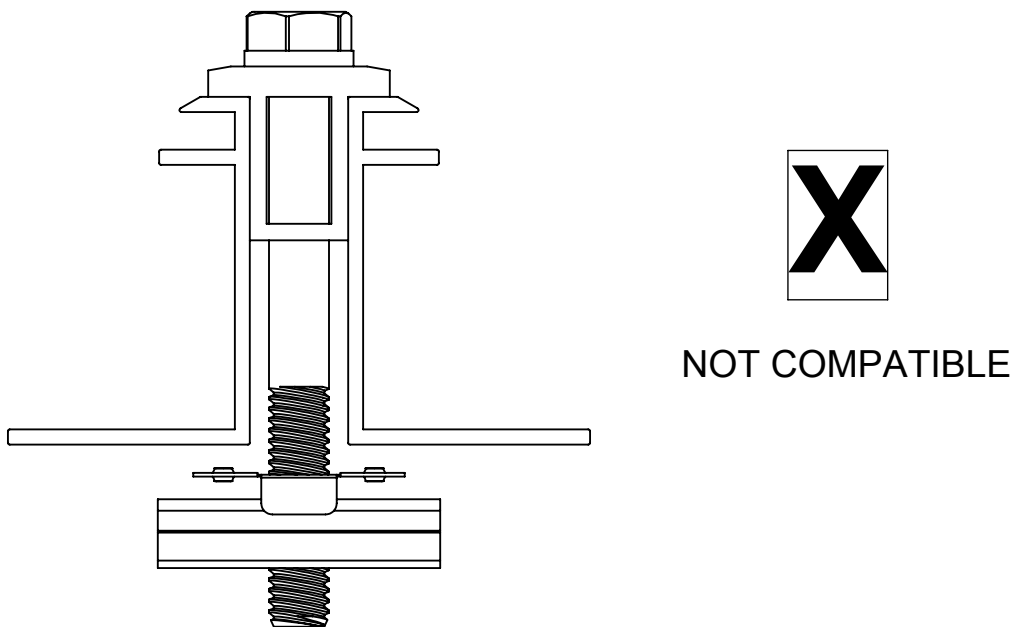
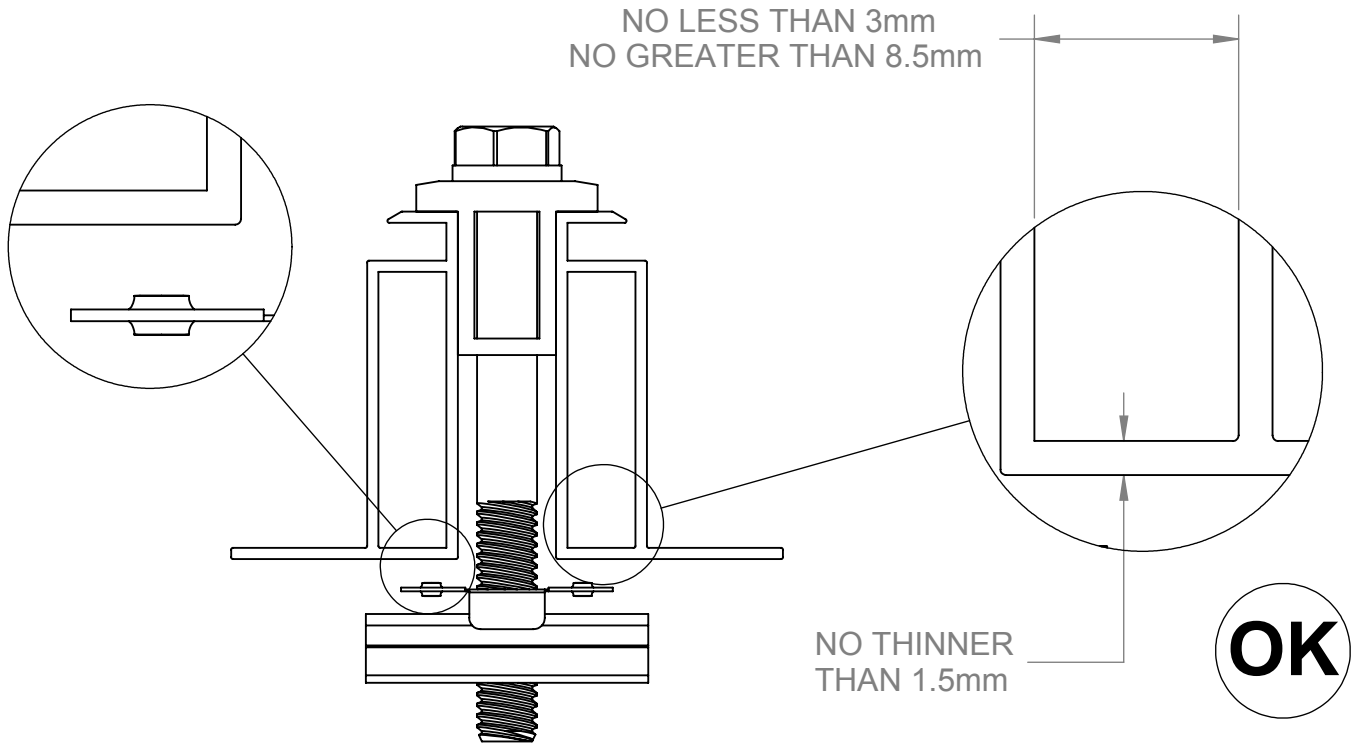


The following is an example of a module frame that is incompatible with the WEEB. The WEEB teeth are positioned only partially under the edge of the module due to the lip on the top edge of the module.



WEEB-PMC on AEE SnapNRack System

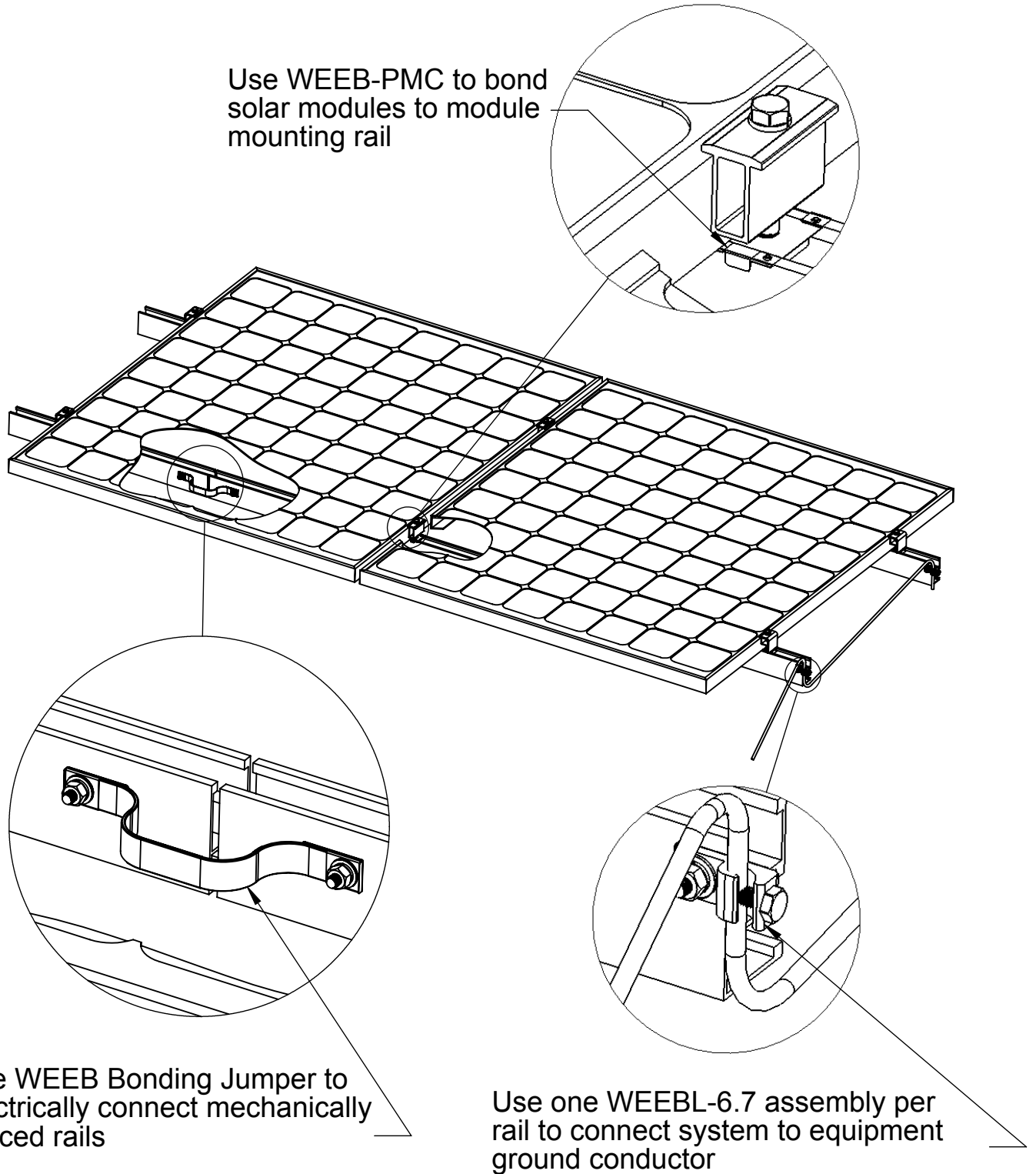
The WEEB-PMC is compatible with the AEE SnapNRack system. However, due to the width of the AEE mid clamp, only module frames with reinforcing box structures can be used for grounding with the WEEB. Below are specifications for such module frames.



**AEE Modules that are box frame.
(Acceptable for use with the WEEB)**

- ✓ **Evergreen ES and ES-A series**
- ✓ **Kyocera – All 130W or larger**
- ✓ **REC – All**
- ✓ **Sanyo HIT – All**
- ✓ **Schott ASE series**
- ✓ **Sharp 175W and larger standard framed modules**
- ✓ **Solar World 175W and larger**

SYSTEM OVERVIEW

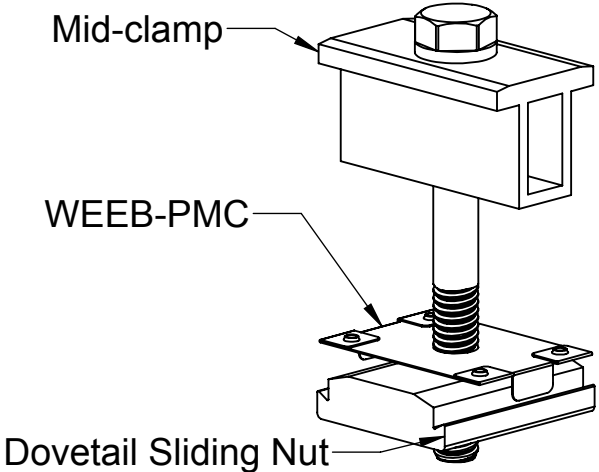


Important notes

1. Use general purpose anti-seize compound on fastener threads when installing WEEBs.
2. WEEBs are intended for **SINGLE USE ONLY**. Functionality will not be guaranteed if reused.

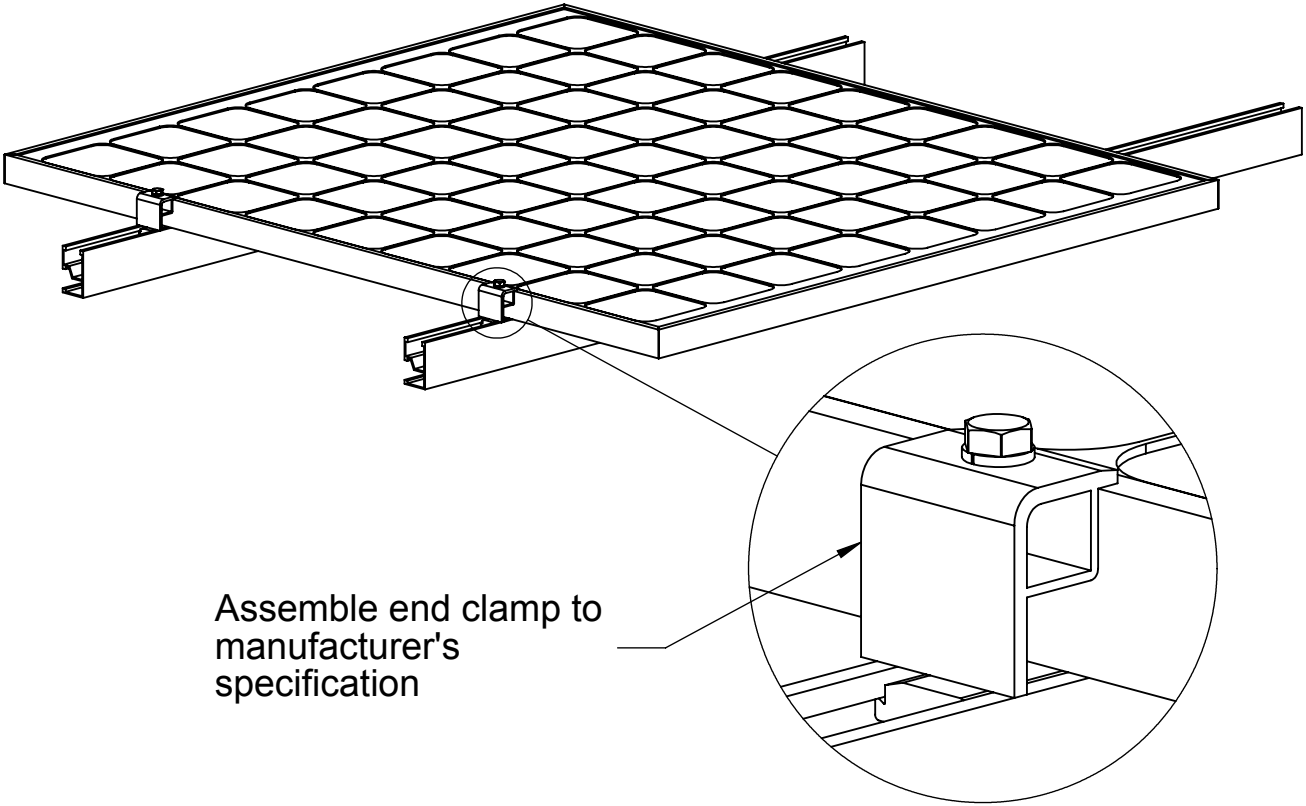
WEEB-PMC ASSEMBLY

1



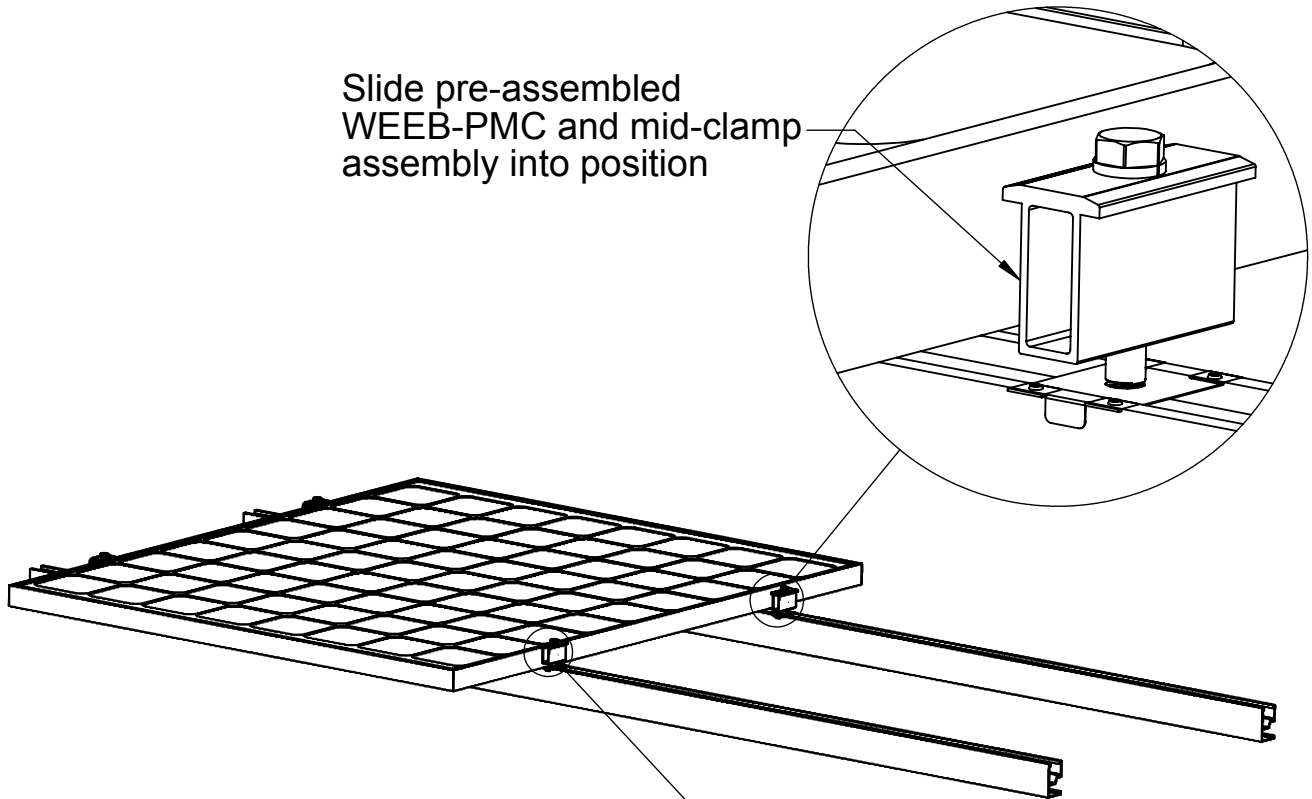
Pre-assemble WEEB-PMC to mid-clamp assembly as shown. Pre-assembling WEEB-PMC to mid-clamp assembly will contain the small individual parts, reducing the possibility of losing parts during installation

2

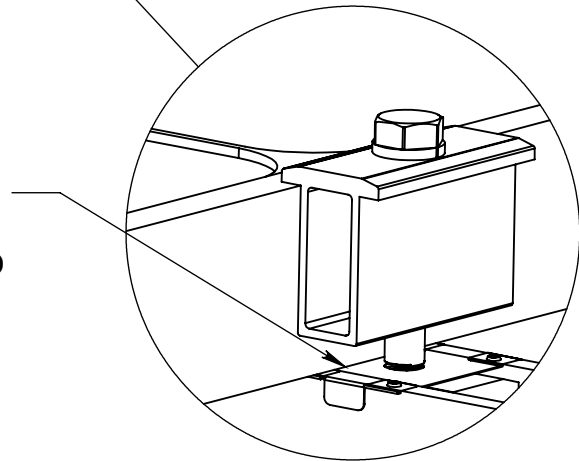


3

Slide pre-assembled
WEEB-PMC and mid-clamp
assembly into position



Slightly lift solar module and
slide WEEB-PMC and mid-
clamp assembly into position.
WEEB teeth will automatically
be aligned under the edge of
the module when the mid-clamp
assembly is correctly installed.



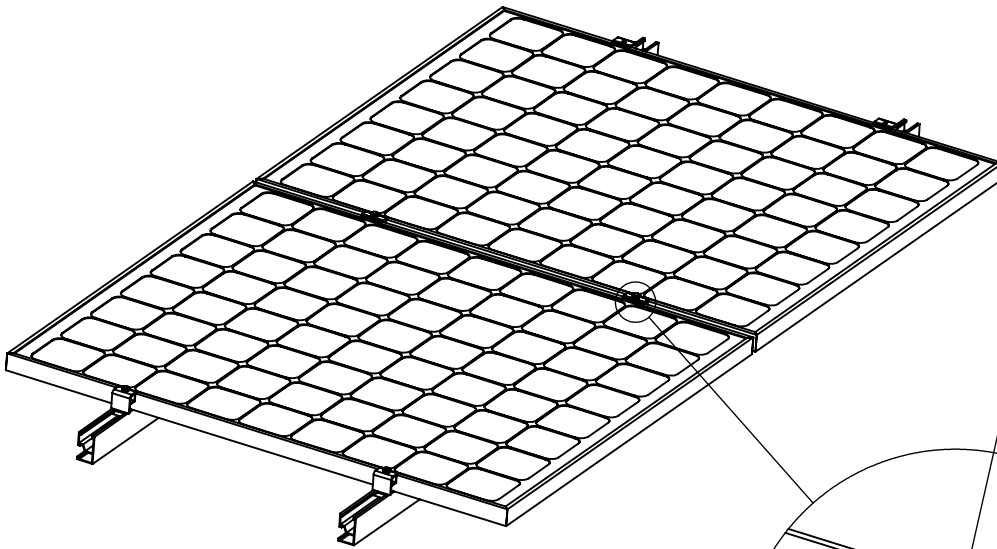
Important note:

To correctly install WEEB-PMC, ensure that both sides of the solar modules are completely positioned against the mid-clamp. Refer to WEEB compatibility page for illustrations.

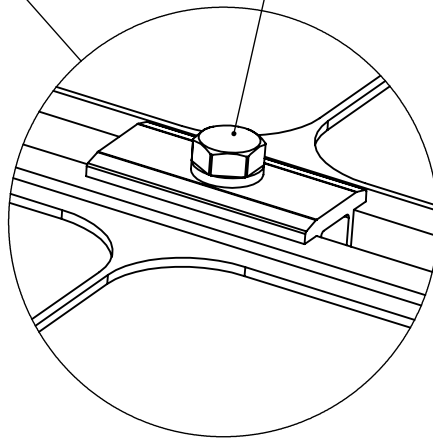
4

Important note:

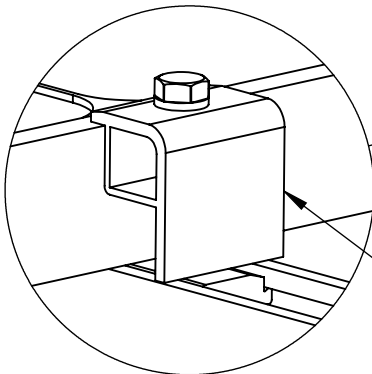
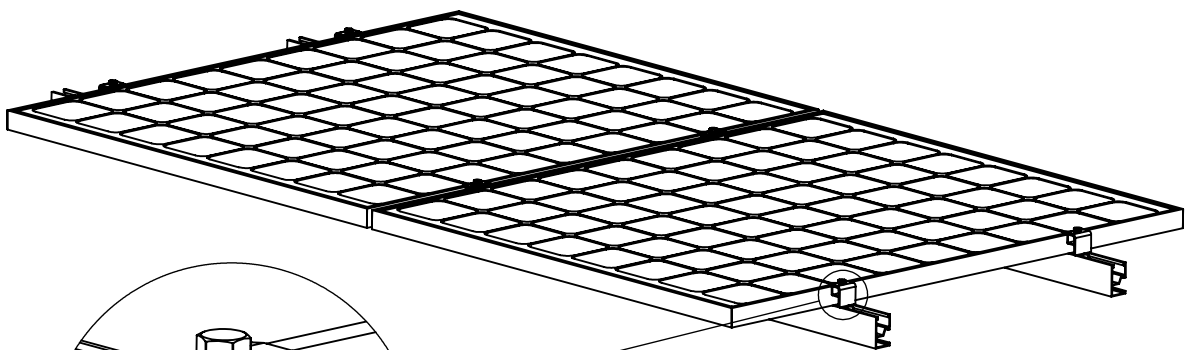
WEEBs are for SINGLE USE ONLY! Do not torque fasteners down if position of solar modules is not finalized. Only slightly tighten fasteners to keep modules in place.



When position of solar modules are finalized, torque fasteners to 15ft-lb / 20.5 N-m using general purpose anti-seize compound on threads



5

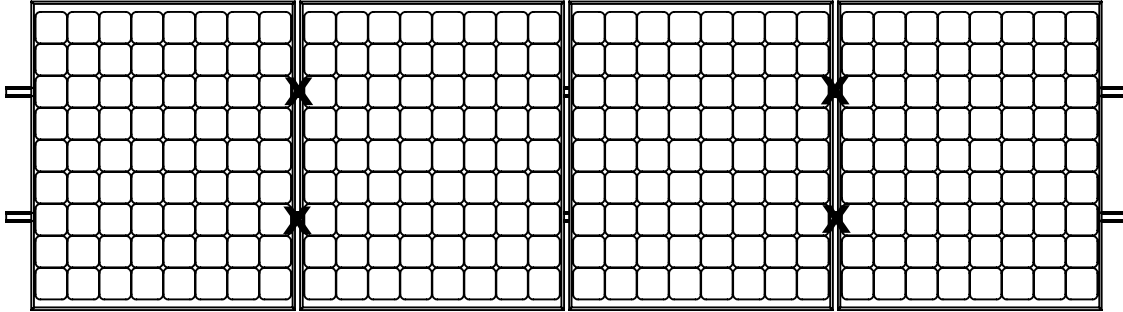


Assemble end clamp to manufacturer's specification

WEEB-PMC LAYOUT

⑥

EVEN NUMBER OF MODULES IN ROW

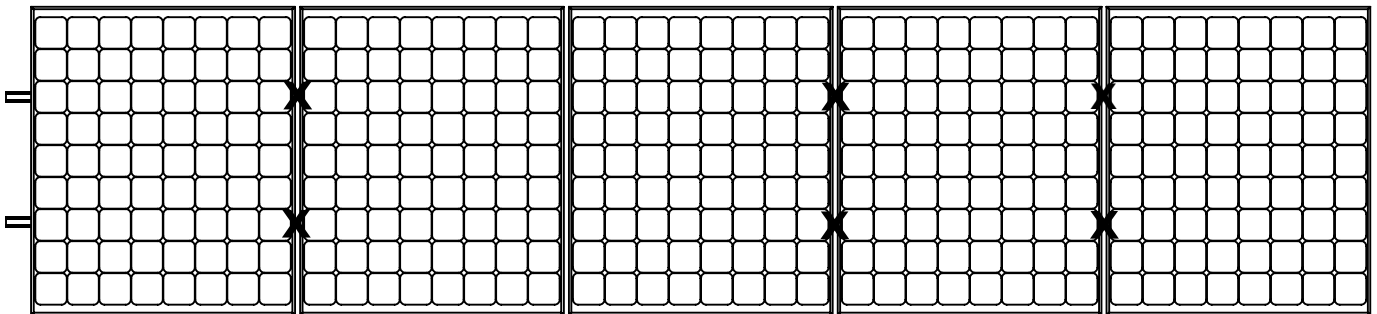


X DENOTES PLACES TO INSTALL WEEB-PMC

$$C \times R = 4 \times 1$$

$$\text{WEEB-PMC NEEDED} = C \times R = 4 \times 1 = 4$$

ODD NUMBER OF MODULES IN ROW



X DENOTES PLACES TO INSTALL WEEB-PMC

$$C \times R = 5 \times 1$$

$$\text{WEEB-PMC NEEDED} = [C+1] \times R = [5+1] \times 1 = 6$$

Note:

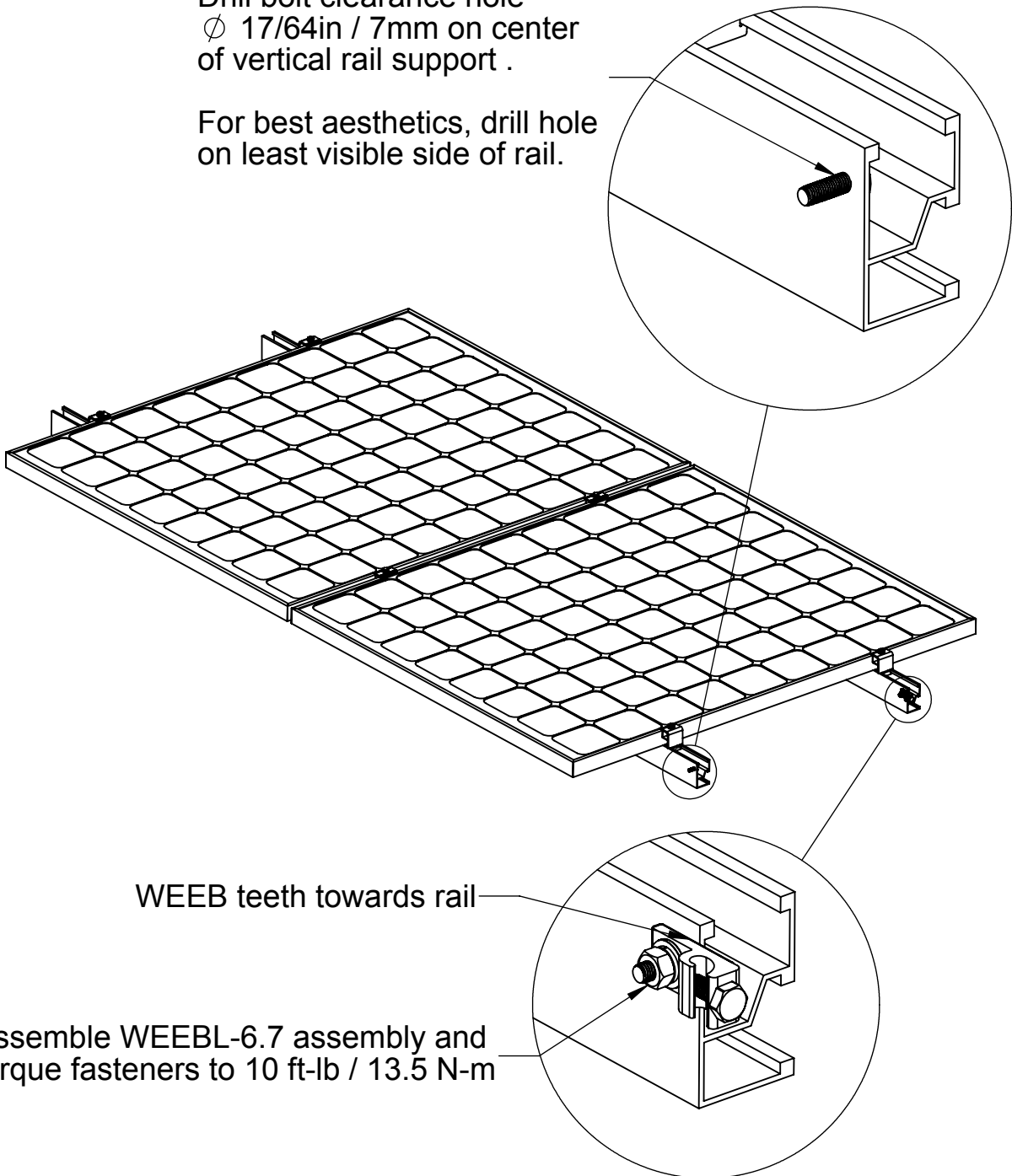
When replacing a single faulty module, also remove the adjacent module which contacts the same WEEBs as the faulty module. This will ensure that there are never ungrounded modules in the array.

WEEBLUG ASSEMBLY

7

Drill bolt clearance hole
 ϕ 17/64in / 7mm on center
of vertical rail support .

For best aesthetics, drill hole
on least visible side of rail.



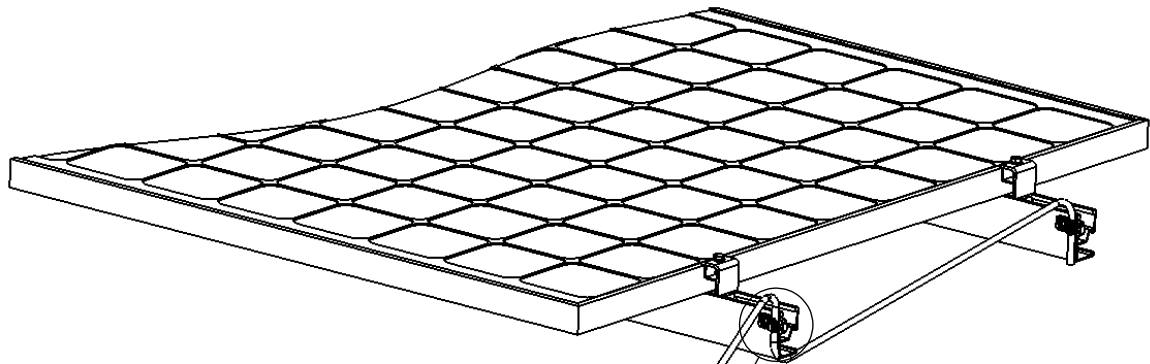
WEEB teeth towards rail

Assemble WEEBL-6.7 assembly and
torque fasteners to 10 ft-lb / 13.5 N-m

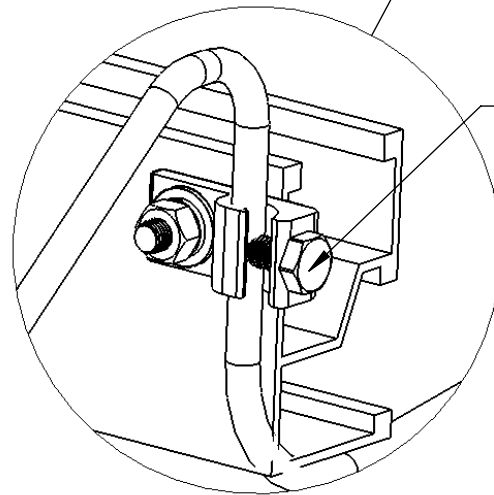
Important note:

**WEEB-6.7 that sits under the WEEBLug is for SINGLE USE ONLY!
Ensure position is correct before tightening.**

8



Equipment ground conductor



Lay in equipment ground conductor and torque bolt to 7 ft-lb / 10 N-m

WEEB BONDING JUMPER ASSEMBLY

- ⑨ WEEB Bonding Jumper can be used for all rail splices including expansion joints.

